



# **INSTALLATION GUIDE**

---

# PACKING LIST

· Smart Toilet                      · Remote                      · Wax Ring

· Flange                      · 7-character Fixing                      · Component

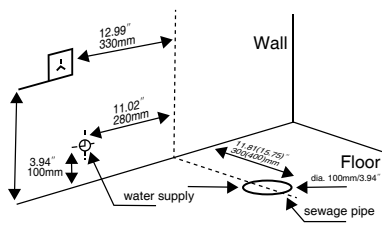
· T-shaped Screw                      · Foam Bottle(O01-2/3)

· Foam Shield (3 Piece/bottle, 300 Times Foam)

· Simple Installation End

## INSTALLATION METHOD

1. Before installation, make sure that the wall and floor tiles of the toilet are completed, and the sewage pipe, water-way and circuit are reserved as shown in the figure. According to the actual pit distance of the toilet, select the corresponding toilet (300mm pit distance, 400mm pit distance). Inlet pressure range: 0.15Mpa(dynamic)-0.75Mpa(static); Inlet water temperature: 4°C-35°C.



2. When the water supply valve is closed, remove the old angle valve, replace it with the angle valve configured by the machine, and use the new hose assembly attached to the product. The old hose assembly cannot be reused.

3. Install the inlet valve on the wall surface 100mm from the ground and about 280mm from the left side of the center of the sewage outlet

# TOILET INSTALLATION

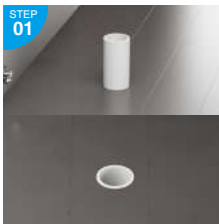
We offer two installation methods, one is simple installation, suitable for self installation, simple and fast.

## I. Simply installation

(takes approximately 30 minutes to 1 hour)

### Tools that need to be prepared

- ①. Water pipe sealant strip
- ②. Glass glue and glass glue extrusion bracket
- ③. The adjustable wrench needs to be able to tighten 3/4 "nuts



Clean the area around the floor drain and level it with the ground.



Align the drain hole of the toilet with the floor drain pipe, place the toilet upright, and then use a marker pen to mark it along the floor and toilet.



Make a circle of glass glue along the marked line.



STEP 04  
Clean the area around the ground sewage pipe. If it is a new house, it is necessary to cut the sewage pipe and level it with the ground.



STEP 05  
Align the toilet and press the ceramic body of the toilet until it is level with the ground. Then check if the toilet is shaking, use a wooden wedge to level it flat until the toilet is stable and not shaking



STEP 06  
Block the screw holes on the ceramic side with the equipped rubber plugs



STEP 07  
Wipe off excess glue from the contact area between the toilet and the ground to make the contact area smooth and aesthetically pleasing



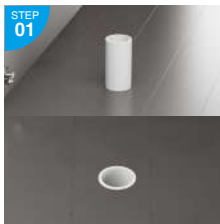
STEP 08  
Install the angle valve and connect the power supply. Press the button on the power supply to turn on the power

## II. Standard installation

(takes approximately 30 minutes to 1 hour)

### Tools that need to be prepared

- ①. Water pipe sealant strip
- ②. Glass glue and glass glue extrusion bracket
- ③. The adjustable wrench needs to be able to tighten 3/4 "nuts



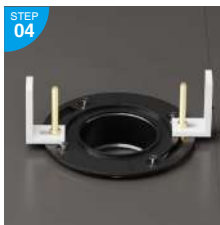
Clean the area around the ground sewage pipe. If it is a new house, it is necessary to cut the sewage pipe and level it with the ground.



Use T-screws to lock the flange with the 7-shaped fixing component



Install the flange into the ground drainage outlet, ensuring that the arrow on the flange is perpendicular to the wall surface



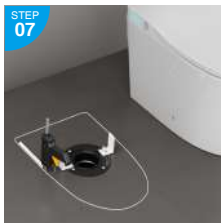
Adjust two 7-character fasteners parallel to the wall and fix the flange to the ground with screws



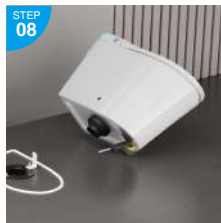
Place the main body of the toilet, adjust its position, align the toilet's drain outlet with the ground drain outlet, and be careful not to damage the 7-character fixing part



Mark along the contact line between the toilet and the ground



**STEP 07**  
Make a circle of glass glue along the marked line



**STEP 08**  
Install the wax ring at the bottom of the toilet drain and compact it



**STEP 09**  
Install the wax ring at the bottom of the toilet drain and compact it



**STEP 10**  
Use side screws to connect the toilet bowl to the 7-character fastener on the flange



**STEP 11**  
Cover with decorative hat



**STEP 12**  
Connect the inlet pipe of the angle valve and the power supply, press the button on the power supply to turn on the device

### III. Use of foam shield



Put 3 foam agents into the foam bottle



fill it with tap water



and then connect the blue foam pipe cover behind the toilet.



Place the foam bottle on the floor next to or behind the toilet to use.

Three foam can be used about 200 times. Please scan the QR code on the toilet lid to purchase the special foam agent.



When the foam is used up and the foam is not obvious, please add new foam agent